



Quercus lyrata



Hydrangea 'Annabelle'



Pieris japonica



Sarcococca hookeriana var. humilis



Rosa 'Blushing Knockout'



Viburnum davidii



Achillea millefolium x 'Citronella'



Caryopteris clandonensis



Liatris spicata



Liriope muscari 'Big Blue'



Lysimachia nummularia



Nepeta x faassenii 'Walker's Low'



Penstemon digitalis 'Husker Red'



Perovskia atriplicifolia



Stachys byzantina 'Helene von Stein'



Molinia 'Karl Foerster'



Sporobolus heterolopis



Schizachyrium scoparium 'The Blues'

I STREET SW: REPRESENTATIVE PLANT PALETTE

RANDALL SCHOOL | PUD Modification





Quercus lyrata



Cotoneaster dammerii



Hydrangea 'Annabelle'



Nandina domestica



Rosa 'Blushing Knockout'



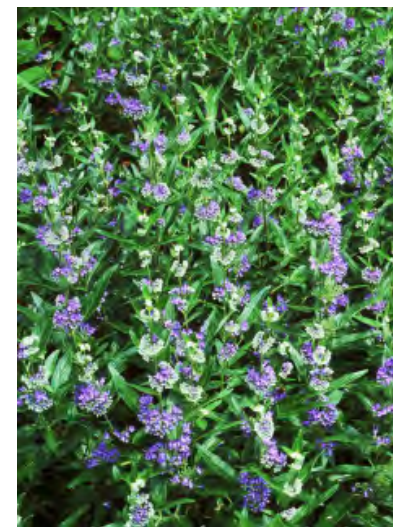
Viburnum x burkwoodii 'Conoy'



Achillea millefolium x 'Citronella'



Ajuga reptans 'Chocolate Chip'



Caryopteris clandonensis



Heuchera villosa 'Autumn Bride'



Liatris spicata



Liriope muscari 'Big Blue'



Lysimachia nummularia



Perovskia atriplicifolia



Stachys byzantina 'Helene von Stein'



Calamagrostis brachytricha



Pennisetum 'Little Bunny'



Sporobolus heterolopis





Liriodenron Tulipifera



Leucothoe fontanesiana 'Nana'



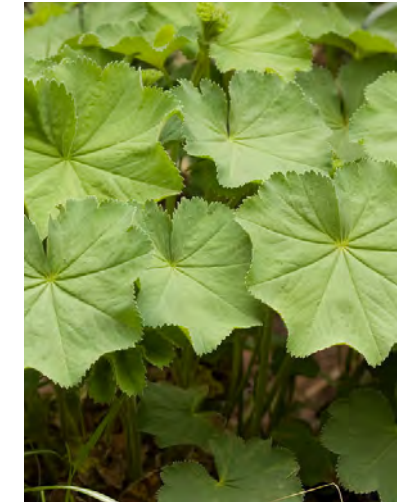
Sarcococca hookeriana var. humilis



Taxus baccata 'Repandens'



Astilbe japonica 'Deutschland'



Alchemilla mollis



Alchemilla mollis 'Auslese'



Hellebores foetidus



Hellebores niger 'White Lady'



Carex flaccosperma



Carex platyphylla



Hakonechloa 'Aureola'



Hakonechloa macra 'Fubuki'



Rohdea japonica



Athyrium nipponicum 'Pictom'



Dryopteris erythrosora



Polystichum acrostichoides



Thelypteris decursive-pinnata

H STREET SW: REPRESENTATIVE PLANT PALETTE

RANDALL SCHOOL | PUD Modification



Betula jacquemontii



Leucothoe fontanesiana 'Nana'



Sarcococca hookeriana var. humilis



Taxus baccata 'Repandens'



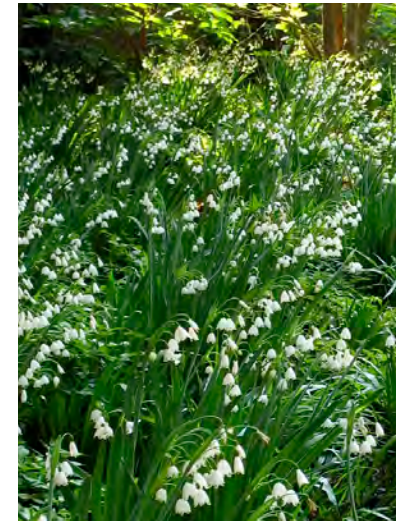
Alchemilla mollis 'Auslese'



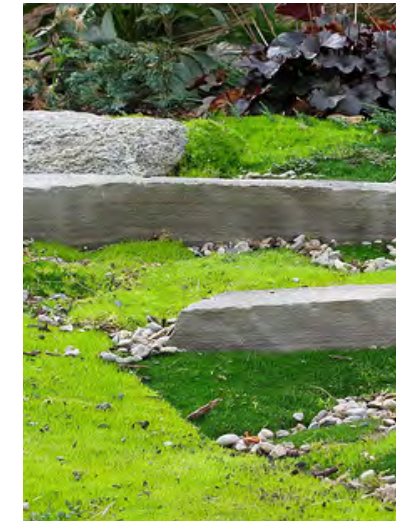
Helleborus niger 'White Lady'



Rohdea japonica



Leucojum aestivum



Sagina subulata



Calamagrostis brachytricha



Hakonechloa macra 'Aureola'



Hakonechloa macra 'Fubuki'



Sporobolus heterolepis



Athyrium filix-femina ssp. asplenioides



Athyrium nipponicum 'Pictum'



Cyrtomium falcatum 'Rochfordianum'



Dryopteris erythrosora

GREENROOF - REPRESENTATIVE EXTENSIVE PALETTE

BOTANICAL NAME / COMMON NAME

PERENNIALS

- Allium cernuum / Nodding Onion
- Allium schoenoprasum / Chives
- Opuntia humifusa / Prickly Pear
- Ruellia humilis / Wild Petunia
- Sedum acre / Stonecrop
- Sedum acre 'Aureum' / Aureum Stonecrop
- Sedum acre 'Octoberfest' / Stonecrop
- Sedum album / Stonecrop
- Sedum album 'Chloroticum' / Stonecrop
- Sedum album 'Murale' / Murale Stonecrop
- Sedum cauticola / Stonecrop
- Sedum cauticola 'Lidakense' / Lidakense Stonecrop
- Sedum floriferum 'Weihenstephaner Gold' / Weihenstephaner Gold Stonecrop
- Sedum hybridum 'Immergrunchen' / Immergrunchen Stonecrop
- Sedum kamtschaticum / Kamtschaticum Stonecrop
- Sedum middendorffianum var. diffusum / Stonecrop
- Sedum reflexum / Stonecrop
- Sedum rupestre 'Angelina' / Stonecrop
- Sedum sexangulare / Stonecrop
- Sedum sieboldii / Stonecrop
- Sedum spurium 'Dragon's Blood' / Dragon's Blood Stonecrop
- Sedum spurium 'Leningrad White' / Leningrad White Stonecrop
- Sedum spurium var Album / Stonecrop
- Sedum telephioides / Stonecrop
- Sedum ternatum / Stonecrop
- Symphotrichum ericoides (syn. Aster ericoides) / Heath White Aster
- Symphotrichum ericoides 'Snow Flurry' (syn. Aster ericoides) White Aster
- Thymus praecox coccineus / Creeping Thyme
- Thymus praecox minus / Creeping Thyme
- Thymus serpyllum 'Coccineum' / Creeping Thyme

GRASSES

- Bouteloua curtipendula / Sideoats grama



Allium cernuum



Allium schoenoprasum



Ruellia humilis



Sedum acre 'Aureum'



Sedum album 'Murale'



Sedum cauticola



Sedum floriferum 'Weihenstephaner Gold'



Sedum hybridum 'Immergrunchen'



Sedum sexangulare



Sedum ternatum



Thymus praecox coccineus



Thymus serpyllum 'Coccineum'

GREEN ROOF: REPRESENTATIVE PLANT PALETTE

RANDALL SCHOOL | PUD Modification



STREET LIGHT: *Washington Globe*



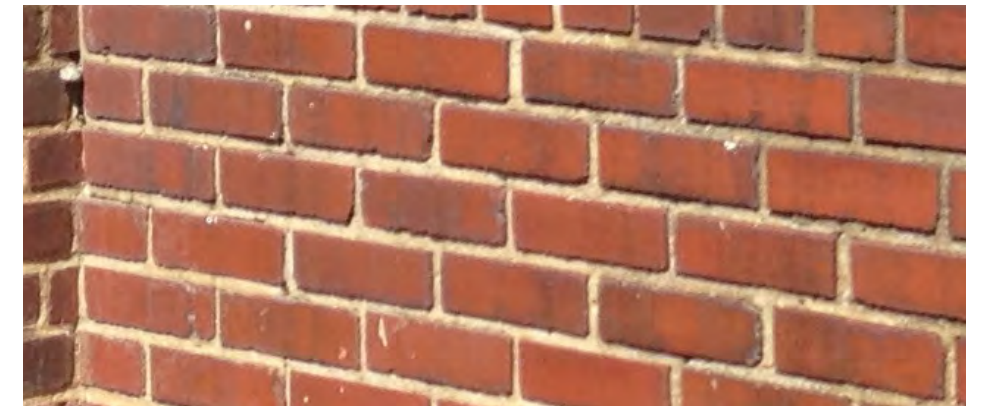
TRASH RECEPTACLE: *Traditional, Black*



BIKE RACK: *Upright, gray*



CAST STONE WALL CAPS



RECLAIMED BRICK PLANTER WALLS



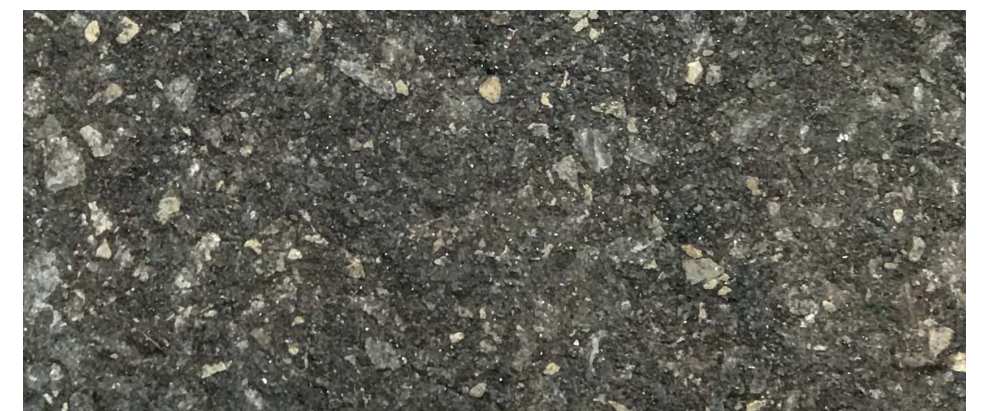
PARKING METER: *Multi-space*



HANDRAIL/GUARDRAIL: *Stainless Steel, with optional inlay panel*



CONCRETE SIDEWALK: *3'x3' Scoring, Hairbrush Finish*



DROP-OFF: ASPHALT BLOCK PAVER: *with concrete curbing*



STREET LIGHT: *Washington Globe*



TRASH RECEPTACLE:
Wire mesh



BIKE RACK: *Upright, gray*



PAINTED METAL FENCING: *gray*



CONCRETE SIDEWALK: *3'x3' Scoring,
Hairbroom Finish*



BOARD FORM CONCRETE WALLS

SITE FURNISHINGS AND MATERIALS: FIRST AND H STREETS SW



POWDER COATED ALUMINUM PLANTER WALLS



PRECAST CONCRETE PAVER A



PRECAST CONCRETE PAVER B

PAGE LEFT BLANK INTENTIONALLY